



**Yaskawa America, Inc.** is a U.S. corporation created to provide automation solutions and support to our customers in North America, Latin America, and South America. Yaskawa is the world's largest manufacturer of AC inverter drives, servo and motion control, and robotic automation systems. Since 1915, Yaskawa Electric has served the world needs for products to improve global productivity through automation.

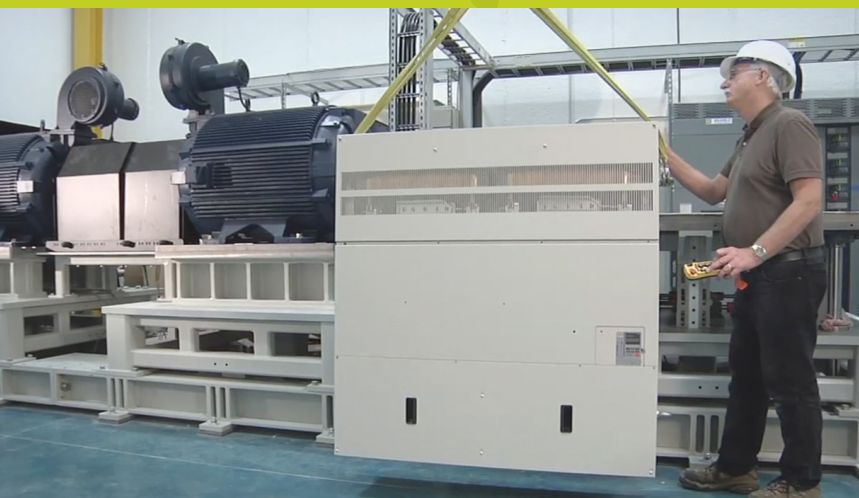
Value-Add Manufacturing.

Value-Add  
Manufacturing 



**Yaskawa America, Inc.**  
Drives & Motion Division

2121 Norman Drive South  
Waukegan, IL 60085  
Tel: 1-800-YASKAWA (927-5292) • Fax: 1-847-887-7310  
DrivesHelpDesk@yaskawa.com • www.yaskawa.com  
Document BL.YAI.05 07/18/12 • © 2012



## Why Yaskawa?

We are the Drives Specialist that works hard to bring intelligent solutions to your challenges with high quality products and personal attention.



Yaskawa can add great value to packaging your core drives components. Our award-winning manufacturing quality, the trust we've established with our customers, and the personal attention we give them, set us apart from other value-add providers. Whether you need a fully-engineered solution that meets your specification or a broad offering of standard and configured products – look to Yaskawa. With Yaskawa, “It’s Personal”.

### Quality

Yaskawa is synonymous with quality. Whether it's the widely recognized capabilities of our variable frequency drives, our ISO-certification, our Kaizen continuous improvement manufacturing process, or the Edward W. Deming award on our mantle – we are very proud of our award-winning commitment to quality.

### Trust

Our customers trust us. They know what they're going to get with Yaskawa. Our commitment to that relationship is highlighted by the fact that our customers are willing to share proprietary design information with us to help them accomplish their goals.

### People

When our customers have a tough challenge, they call us because they have confidence in our people. They don't want just parts or products. They want solutions. And our people are willing to work harder to provide that. Our certified technicians use Kaizen to blend production efficiencies with product checks at every stage to ensure everything we produce meets our unrelenting drive for quality.

“Quality is more than just a buzzword for us and it goes beyond the product itself. It's ingrained in the culture at Yaskawa.” – Mike Knapek, President, Yaskawa America, Inc.

## Value Add Manufacturing

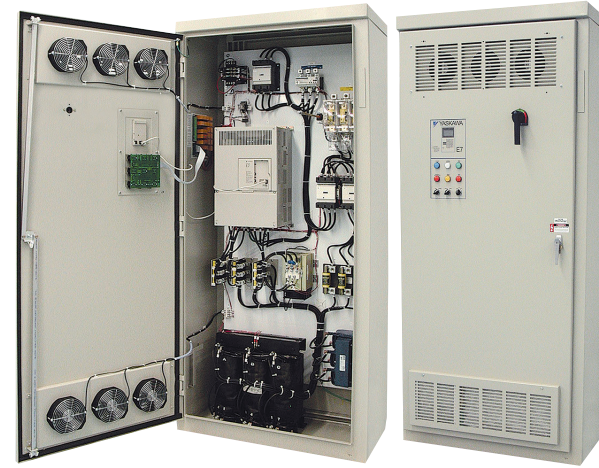
The unique footprint of our value-add manufacturing facility in Oak Creek, WI. enables easy access to people and products throughout your product development process. It results in the industry's shortest lead time on your orders.

Production lines are set up efficiently to assure consistent design and manufacturing of our NEMA

Type 1, 12, and 3R value-add products. All products manufactured at our Oak Creek facility are Made in the USA with foreign and domestic components and comply with the Buy American Act and the American Recovery and Reinvestment Act of 2010. This approach enabled us to earn both ISO and UL508A certifications. Finally, all fabricated enclosure packages are built off our designs and built locally allowing us to minimize our inventory and reduce your cost.



## Value Add Products



### Customer-specific products

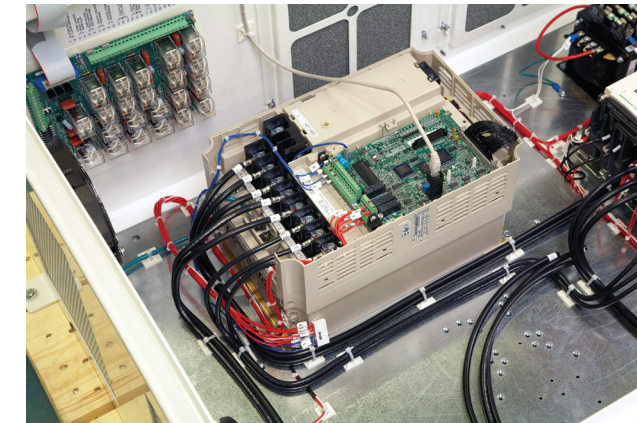
Many of our customers call on us to create a configurable product and delivery system to meet their repeat order needs. You can work directly with our engineering staff to define your needs and establish a product design. We will create an efficient order-assembly-delivery program to help you meet your real-time demands. Below are some examples of customization options we offer::

- Cost
- Speed
- Flexibility
- Size
- Paint
- Component Selection
- Heating/Cooling Options
- Multiple Drives



### Standard configured products

We can enhance your core package quickly and easily with our standard configured products. Order from stock or from our price books by part number. Our standard NEMA Type 1, 12, and 3R configured products meet the majority of customer requirements. In the last 25 years, our configured business has expanded from 3 people building panels to 125 highly-trained associates in a 130,000 square foot facility focused on providing you with the solution you need.

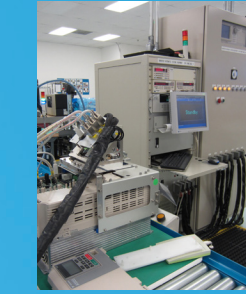


### Fully-engineered products

Both end users and OEM customers have come to rely on our fully-engineered products. These products are based off of our standard configurations but evolve into a customized package just for you.

## Testing & Analysis

### Quality is Not an Accident

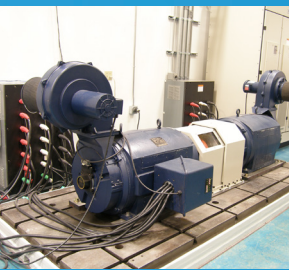


No other manufacturer puts its products through as many tests, or as arduous a testing process as Yaskawa. All printed circuit boards are functionally tested while under power. All Yaskawa products are 100% tested under full current.

### Lab Testing/Product Certification

Yaskawa conducts its own product qualification testing in its ISO certified test lab. Yaskawa products are tested not only under normal conditions, but also for:

- Extreme Temperature/Humidity
- Vibration
- Package Drop
- Input Voltage Tolerance
- Noise Immunity
- Electrical Insulation Stress
- Under/Over-Voltage Protection
- Momentary Power Loss
- Output Short Circuit Protection
- Power ON/OFF & Start up Iterations
- Overload Protection
- Ground Fault Protection
- Washdown Test
- Input/Output Phase Loss Test



### The Complete Package

Quality, Trust, and People are the principles that differentiate Yaskawa from our competition. Our testing and analysis procedures further validate these principles and assure that our products meet or exceed your requirements for a consistent product at a competitive price. We commit to that. We can because to us, It's Personal.

